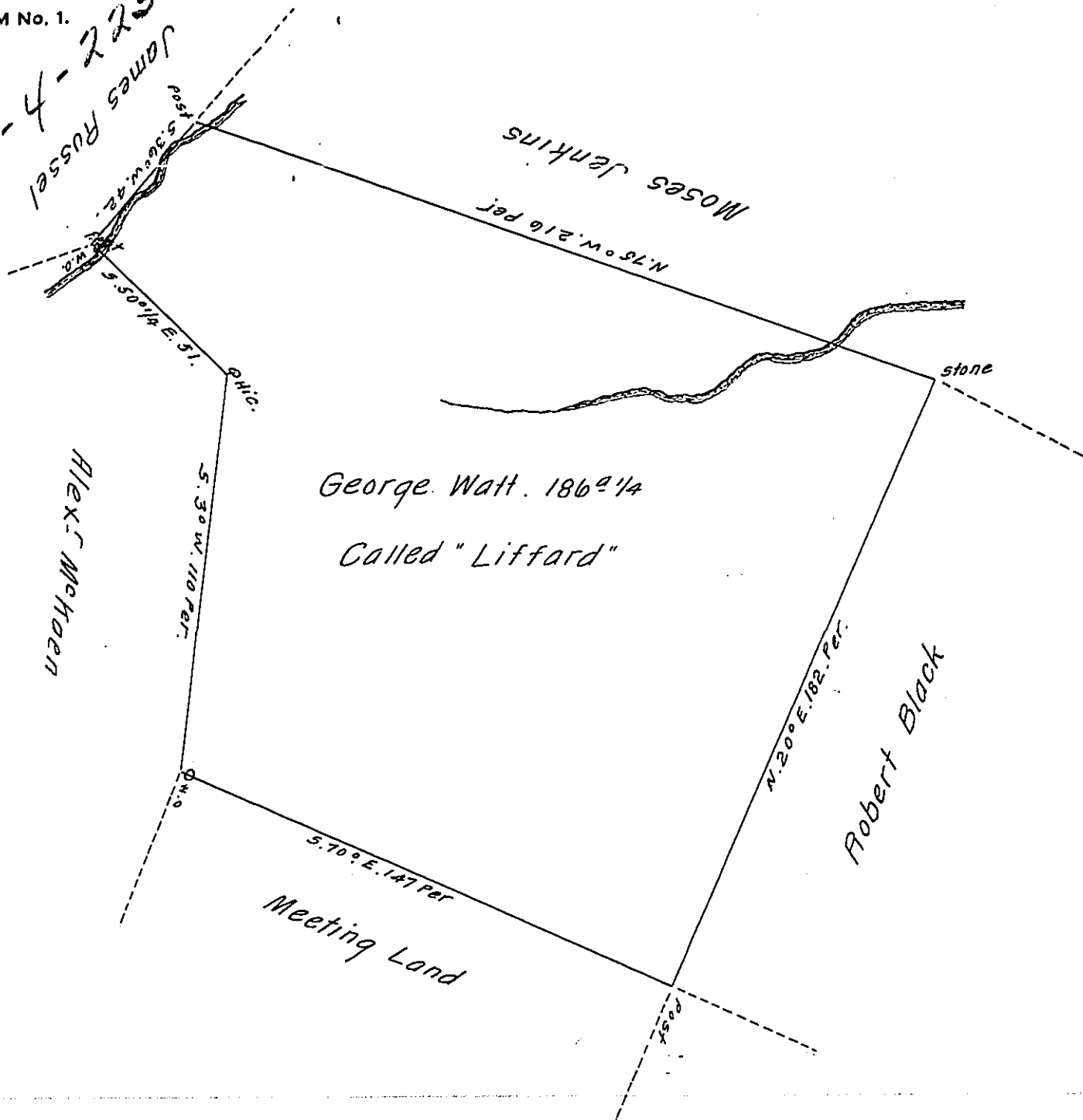


B-4-225  
James Russel



Situated in Cumberland Township York County and is part of the Honorable, The Proprietaries Manor of Maske, Surveyed January 14<sup>th</sup> 1774.  
 In Pursuance of a Warrant for 160<sup>ac</sup> Dated Dec<sup>r</sup> 3<sup>d</sup> 1773.

To John Lukens Esq<sup>r</sup> }  
 Surveyor General } By Arch<sup>d</sup> McClean. D.Y. 5<sup>r</sup>

IN TESTIMONY that the above is a copy of the original remaining on file in the Department of Internal Affairs of Pennsylvania, made conformably to an Act of Assembly approved the 16th day of February, 1833, I have hereunto set my Hand and caused the Seal of said Department to be affixed at Harrisburg, this eighteenth day of July 1910.

*Henry Houch*

Secretary of Internal Affairs.